



South East Solutions Ltd

Nationwide Professional Investigations



Welcome to SES

Leaders in Claims Deficit and Absence Abuse Reduction

Since 2002, SES has been dedicated to delivering outstanding performance in the field of fraudulent claims investigations and corporate surveillance. Our effective intervention against opportunist fraudulent claimants has enabled our clients to successfully repudiate such claims and thereby significantly reduce their expenditure.

Key to sustaining the business excellence with which SES has become synonymous, is our ability to understand the specific needs and expectations of our clients; reflecting that knowledge in our decision-making, service delivery and in the way our innovative, operational practice is conceived and managed.

We are proud of our continuing successes, achieved through maintaining the highest standards in every facet of our work and remaining competitive; a testament to which has been a sustained growth in our nationwide client base.

We would like to take this opportunity to welcome you to working with SES and present the following overview of our professional investigative services.

Why Clients Choose SES

By tailoring our service to the specific needs of our clients, we are able to deliver a range of key benefits, which include:

- Nationwide coverage
- Evening & weekend operational services
- Single point of contact assigned in every case
- Fast-track turnaround in MOJ stage 1 cases
- Scene investigation, incorporating HD video imaging, digital photography, house to house enquiries, CCTV retrieval
- Professionally trained staff, with extensive investigative knowledge and experience
- Conventional and technical surveillance methods
- Evidential report, CPR compliant statements
- Provision of a bespoke risk reduction menu



**Providing Best Value,
through an Efficient, Effective
and Competitive Service Delivery**

Professional Services

Fraudulent Claims Investigations

- Personal Injury
- Damage Repairs
- Theft
- Vehicle Hire
- Vehicle Storage



Locus Examinations

Surveillance

- Injury Claims
- Staff Absenteeism
- Organised Criminal Networks
- Internal Theft



Trace Enquiries



Witness Statements



Fraudulent Claims Investigations

To combat escalating trends in fraudulent claims for personal injury, vehicle hire/storage and damage repair, SES have established an analytical approach in the investigation of such matters. Our professional and timely intervention identifies definitive evidence where blatant fraud exists and thereby enables clients to successfully repudiate these claims.

Locus Examinations

We apply a forensic approach to our examination of every locus and provide detailed computerised plans of scenes, through digital road measurement, high definition photography and video imaging. These are supported by an album of photographs and an evidential report by the investigator who conducted the investigation.

Our trained and experienced scene investigators will evaluate all hazards present and provide professional opinion as to whether they were a contributory factor in the collision. Additionally, they will provide reference to potential breaches of relevant road traffic legislation and non-adherence to related aspects of the Highway Code.

Video footage of routes and scenes can also be provided if required.



Professional Services

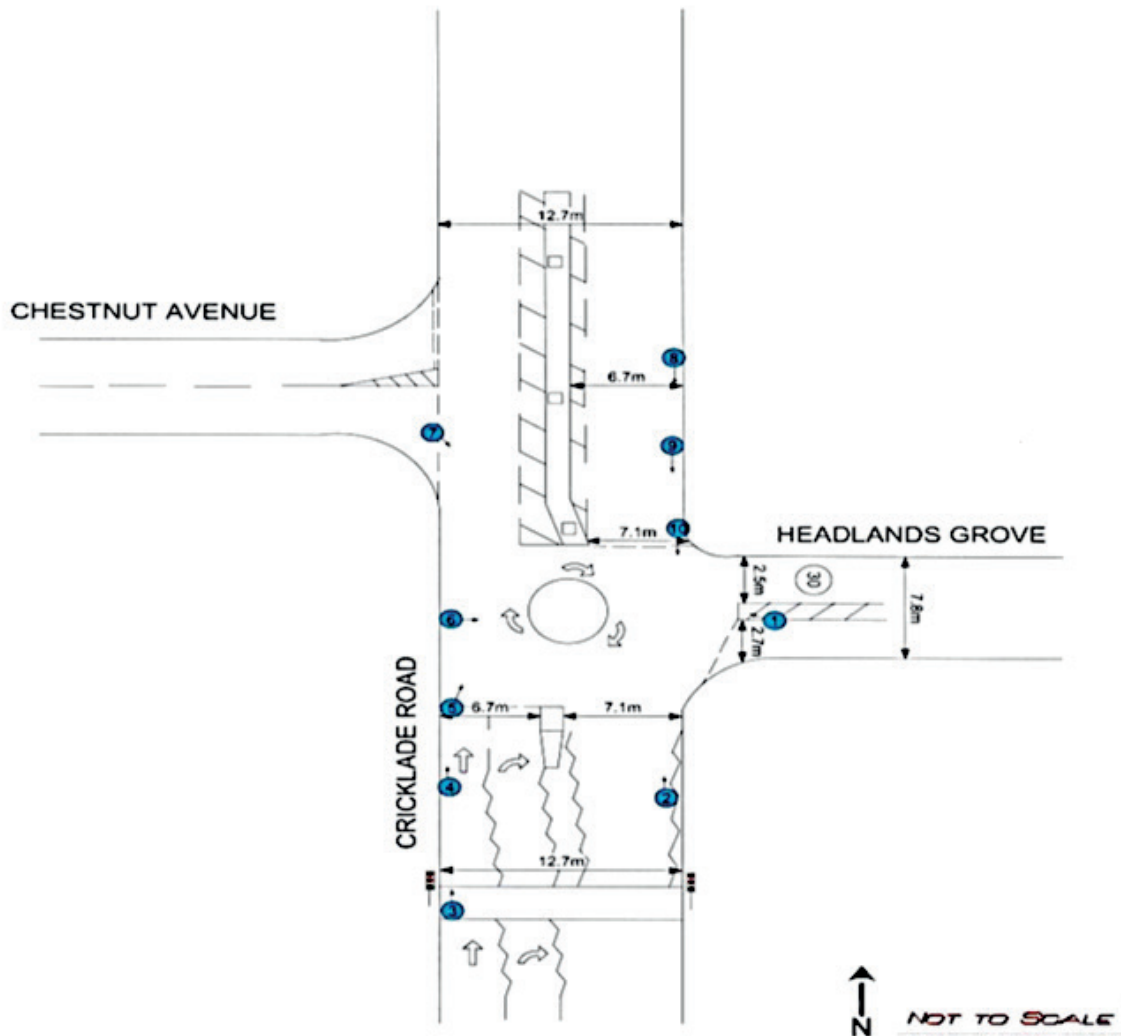
Locus Plan

Case Number: 1M/598752

Location: Cricklade Road J/W Headlands Grove

Description:

Date of RTA: 04/02/2012 Scene Attended: 14/02/2012 Speed Limit: 30 mph



Video Surveillance

All of our surveillance operatives are professionally trained and experienced, the majority having served within the Police and Military. They adhere to a Standard Operating Procedure, which underpins all surveillance work undertaken and with due regard to the Regulation of Investigatory Powers Act 2000 and Human Rights Act 1998. We have surveillance operatives actively engaged on a daily basis and can respond to demand at short notice.



We are registered with the Information Commissioners Office (ICO) and adhere strictly to the principals of the GDPR 2018. Accordingly, the lawful and correct treatment of personal information by SES is paramount to maintaining trust and confidence between those with whom we deal and ourselves; and to meeting our objectives with absolute integrity.

Our undisputed video evidence has been instrumental in both the reduction and retraction of exaggerated personal injury claims, saving our clients from substantial financial loss.



Professional Services

Absence Management

With the cost of staff absenteeism consistently increasing and thereby impacting on performance, productivity and morale, the need to have a robust absence management process is paramount.

Accordingly, we offer a range of bespoke services to provide employers with evidence that will enable them to determine whether the absence is in fact genuine and where the contrary is established, to instigate appropriate action.



Internal Thefts

In the event thefts from locker rooms, property stores or company property, we have capability to undertake covert, technical surveillance as means of investigating the matter. We would provide evidential package to include DVD footage and a factual report of our findings.



Trace Enquiries

As subscribed members of industry specific on-line databases, we are able, legitimately and ethically, to successfully trace witnesses, debtors and absentees. History relating to Directors and Limited Companies can also be provided, as can details from Land Registry.



Professional Services

Witness Interviews and Statements

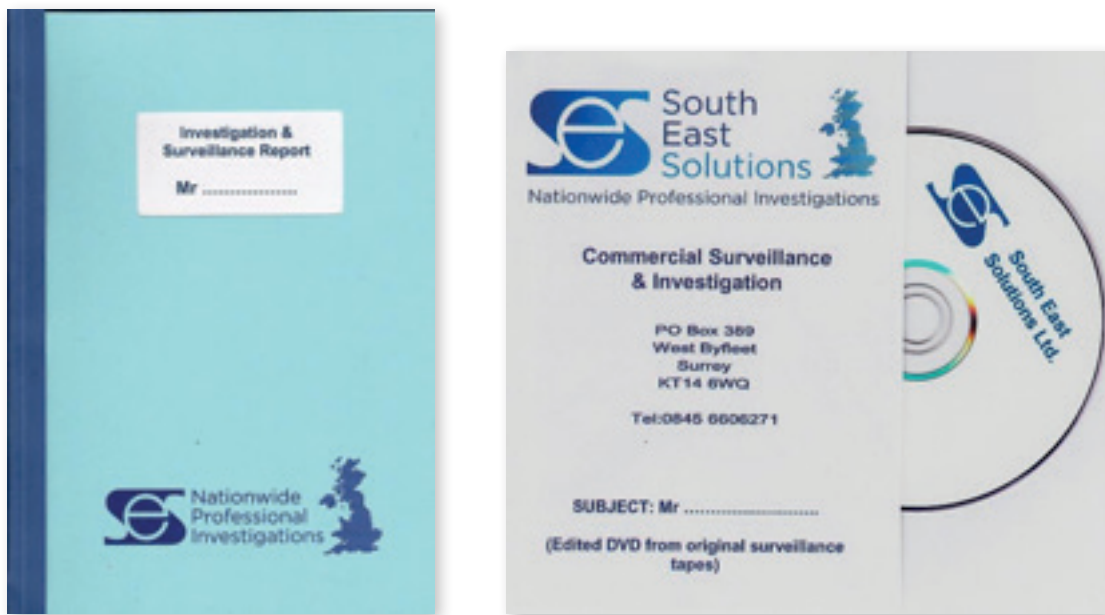
Our investigators, many of whom are former Police Officers, have extensive experience in advanced interviewing methods. All are trained in the National Investigative Interviewing ('PEACE') model and are fully familiar with the rules of evidence, both in respect of criminal and civil cases.

Careful planning and preparation precedes every interview, including the development of a written plan, taking into account information already known, facts to be established and key points to be determined. The information gathered during the course of the interview is then carefully evaluated and where further investigative action is identified, this is expedited.



Reporting to Clients

At the conclusion of an instruction, we provide clients with an evidential package, including factual report, statements and where relevant, DVD footage and digital photographic images.





Examples of our work, including reports, photographs, locus plans and video, together with our competitive pricing structure, can be made available upon request.

For further information, please contact us today:

Telephone: 0845 660 6271

Email: enqs@southeastolutions.co.uk

SES Ltd.

PO Box 389

West Byfleet

Surrey, KT14 6WQ